

A tempting life
invites you



KIARA RESIDENCY

Enriched Living

2 BHK Apartments
Sushant Golf City, Lucknow



A Project By
KIARA
Lifespaces
An Alpnaa Real Estate Venture



A dream unfolds.

Your search for a dream home ends here.. Kiara Residency is the essence of true community living empowered by amenities and activities that infuse a sense of belonging.

A 2BHK Residential society of 288 apartments, 3 towers of stilt and 16 floors, Kiara Residency is an affordable blend of thoughtful floor plans, attentive layout and modern elevation amidst a distinctive landscape.

Offering stunning views of the international standard 18 holes Golf course, Kiara Residency is an endeavour to enrich the quality of your life, offering Luxury within Reach!



The Location Advantage

SUSHANT GOLF CITY



KIARA RESIDENCY

Enriched Living

Site Address: Group Housin-3, Sector G, Sushant Golf City, Lucknow - 226030
Marketing Office: Shopping Square 2, Sector D, Sushant Golf City, Lucknow - 226030

For More Details, Call: **8081 777 906**

Ms. Ashwini Singh
+91 90449 27768

Mr. Pulkit Chawla
+91 96751 91183

sales@kiaralifespaces.com | www.kiaralifespaces.com

Disclaimer: This KIARA Residency brochure is purely conceptual. The pictures, images are for representative purpose only. The areas, prices, elevation & visuals are proposed and indicative and are subject to change. The areas, prices, elevation and specifications in the Sale Agreement signed between you and the Company shall be final and binding. This brochure does not constitute any form of offer, the purchaser is governed by T&Cs of Sale Agreement. Booking is subject to confirmation and acceptance of T&Cs.

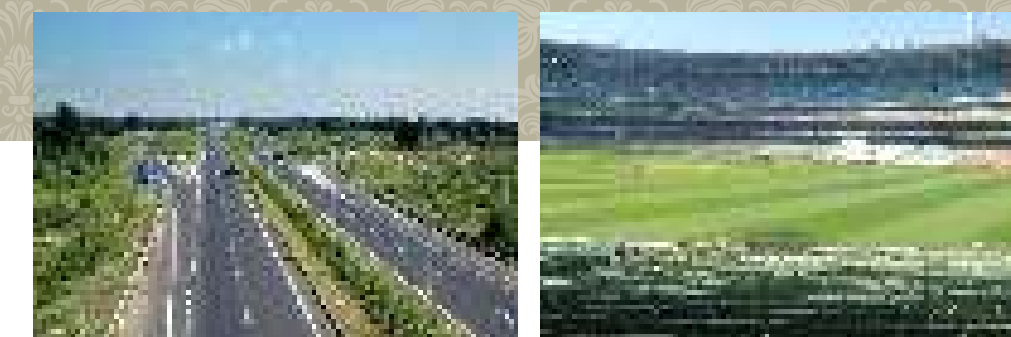


Kiara Residency is strategically located in Lucknow within Sushant Golf City - a Hi-tech Township sprawling across 6465 acres.

Situated on Amar Shaheed Path and Lucknow-Sultanpur Highway, this ultra modern township has an 18 holes international standard championship Golf Course surrounded by Residential and Commercial Developments.

In close proximity to the highway, the Metro, hospitals, schools and colleges, IT city and the International Cricket Stadium, it combines the facilities of the city and the beauty of calming nature.

Making life on the greens a reality, Kiara Residency has been specially designed to exceed your expectations.



Amenities



- | | | |
|---------------------------------------|--------------------------------------|-----------------------|
| A - Club House | B - Swimming Pool | E - Landscaped Garden |
| • Children's Pool & Play Area | C - Approach from Wide Roads | F - Shops & Grocery |
| • Indoor / Outdoor Banquet Facilities | G - Stilt Parking | H - Open Parking |
| • Gymnasium | D - Entrance Gate with 24*7 Security | |
| • Yoga Studio | | |

Specifi

FLOOR FINISHES:

- Living / Dining: Vitrified tiles, Single Charge Soluble Salt.
- Bedroom: Stone flooring on treads
- Balconies: Non-skid ceramic tiles

TOILETS:

- Flooring: Anti-skid ceramic tiles
- Walls: Ceramic glazed tiles as per architectural design
- Chinaware: European Type W.C. & wash hand basin (White)
- Fittings: C.P. fittings BIS approved
- Water Supply: Provision for hot & cold water supply
- Other Fixtures: Soap dish and health faucet

JOINERY:

- Windows: Powder coated aluminum windows with glass
- Doors: Skin moulded door shutter with aluminum fittings

KITCHEN:

- Flooring: Anti-skid ceramic tiles or equivalent
- Dado: Ceramic tiles cladding on walls as per architectural designs
- Counter: Stone
- Water Supply: Provision of hot and cold water supply
- Fittings: C.P. fittings
- Sink: Single bowl stainless steel sink with drain board

FINISHES:

- Internal: Drawing and dining rooms / bedroom walls shall be finished with O.B.D. paint
- External: Pleasing elevation with semi permanent finish / all weather exterior paints

OTHER FEATURES:

- Electrical: Copper wire in conduits with modular switches
- Provision of DTH points in drawing room and all bedrooms
- Telecommunication: Provision of telephone points in drawing / dining & bedroom

caions



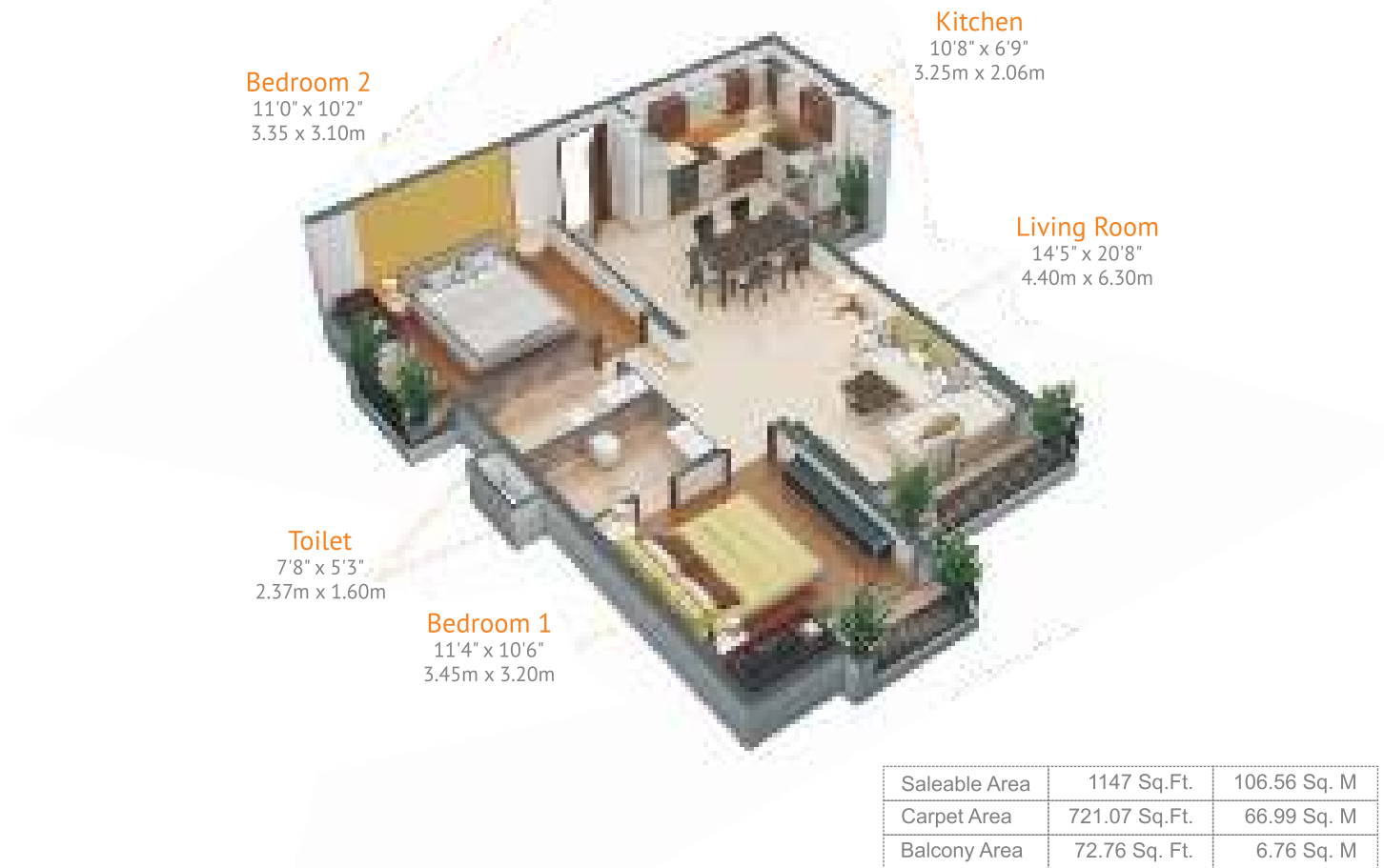
UNIT 1



UNIT 2



UNIT 3



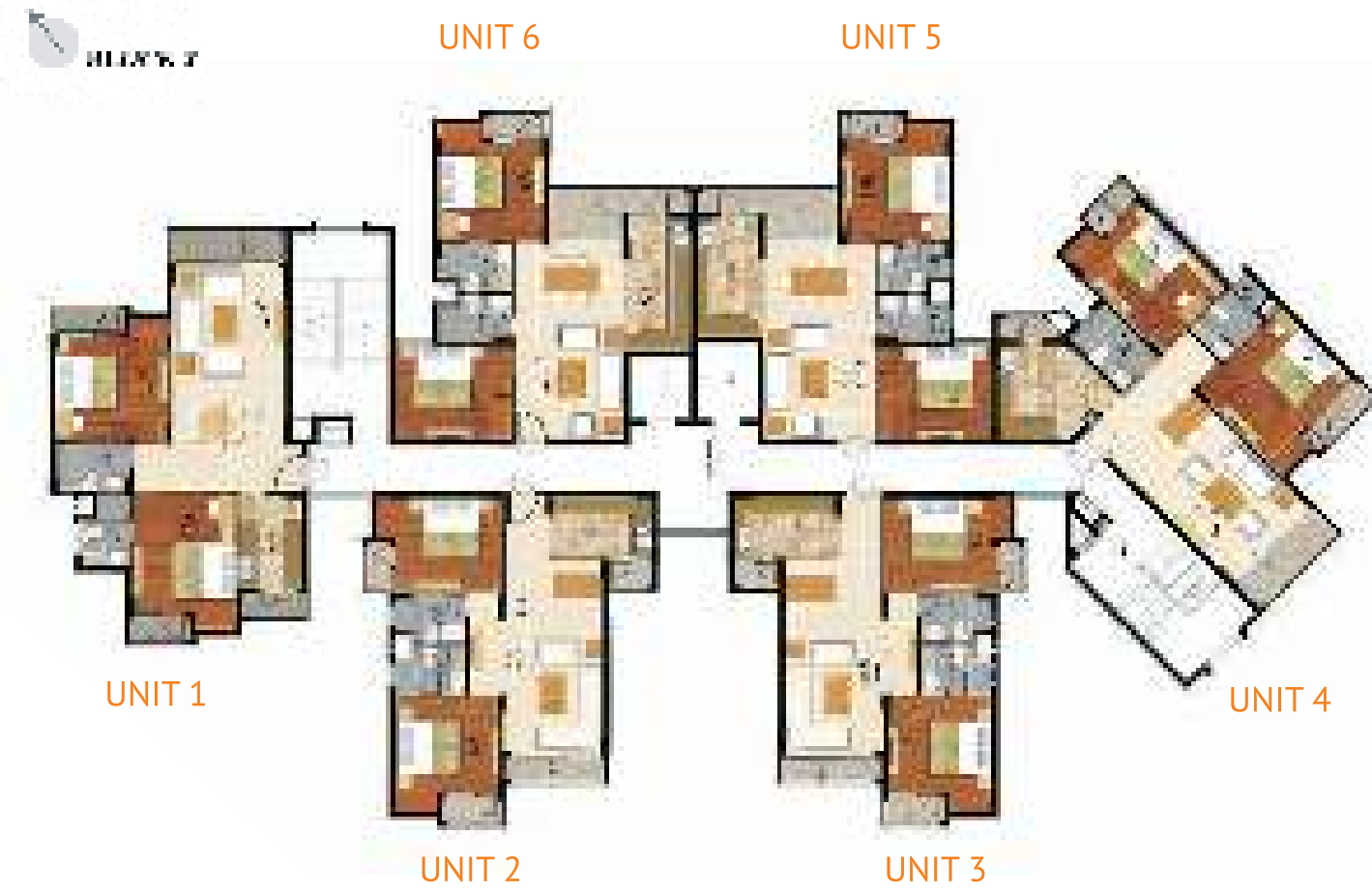
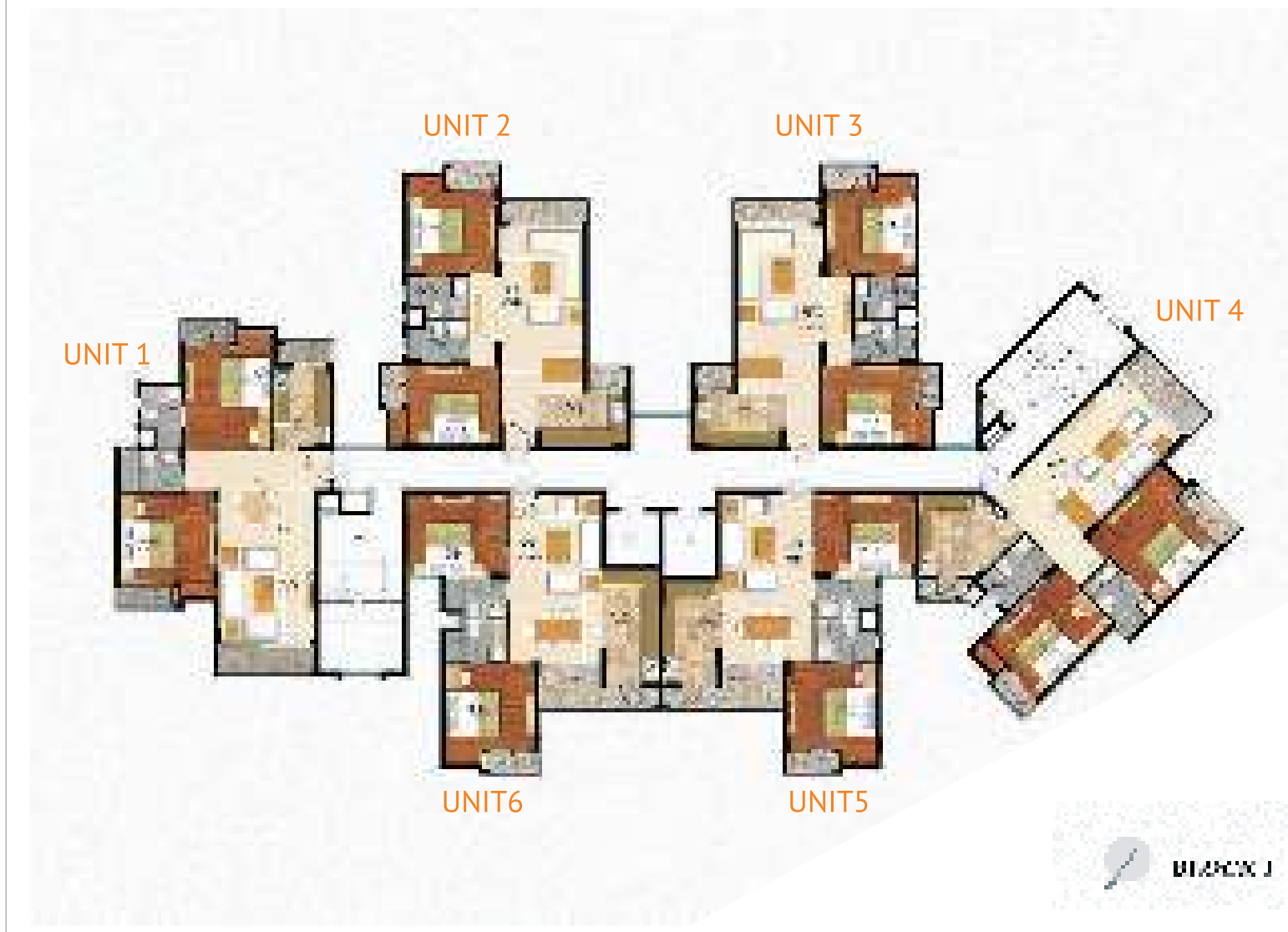
UNIT 4



Floor Plans

TYPICAL FLOOR PLAN

Type of Units	Unit Carpet Area	Unit Balcony Area	Saleable Area
UNIT-1	73.23 Sq. M. 788.24 Sq. Ft.	8.27 Sq. M. 89.02 Sq. Ft.	118.17 Sq. M 1272 Sq. Ft.
UNIT-2	66.99 Sq. M. 721.07 Sq. Ft.	6.76 Sq. M. 72.76 Sq. Ft.	106.56 Sq. M 1147 Sq. Ft.
UNIT-3	66.99 Sq. M. 721.07 Sq. Ft.	6.76 Sq. M. 72.76 Sq. Ft.	106.56 Sq. M 1147 Sq. Ft.
UNIT-4	72.41 Sq. M. 779.41 Sq. Ft.	8.37 Sq. M. 90.09 Sq. Ft.	116.78 Sq. M. 1257 Sq. Ft.
UNIT-5	63.29 Sq. M. 681.25 Sq. Ft.	7.28 Sq. M. 78.36 Sq. Ft.	96.53 Sq. M. 1039 Sq. Ft.
UNIT-6	64.29 Sq. M. 692.01 Sq. Ft.	7.28 Sq. M. 78.36 Sq. Ft.	100.61 Sq. M 1083 Sq. Ft.



UNIT 5



UNIT 6



KiARA Lifespaces

My passion is design led me to complete my degree in architecture from the prestigious School of Planning and Architecture, Delhi. After more than a decade of running a successful business in Interior Design and Architecture, I realized my initial dream of building homes. With an understanding of design sensibilities and deep-rooted values of quality, transparency and commitment, I made my dream of reality. Just like my aspirations found translation, I would like my clients to find their expressions and dreams in enriched spaces.

Alpana Kirolskar (B.Arch)
Chairperson & Managing Director



KiARA Lifespaces, under the leadership of Alpana Kirolskar, is a real estate company driven by design aesthetics, quality, and commitment.

This company is focusing on providing 2 BHK housing for the mid income segment with improved amenities and infrastructure which will endeavor to enhance the quality of life. As an Architect, Alpana has worked with private clients and real estate company and understand the importance of balancing efficient use of livable spaces with an enriched living experience. Kiara Residency is an expression of her passion and dedication, with a mission to meet the customer's aspirations and expectations. We welcome you to the essence of true community living.